

Manual Dimmer Installation Kit

Please read this manual totally and carefully before you start. **Installation by qualified professionals only!**

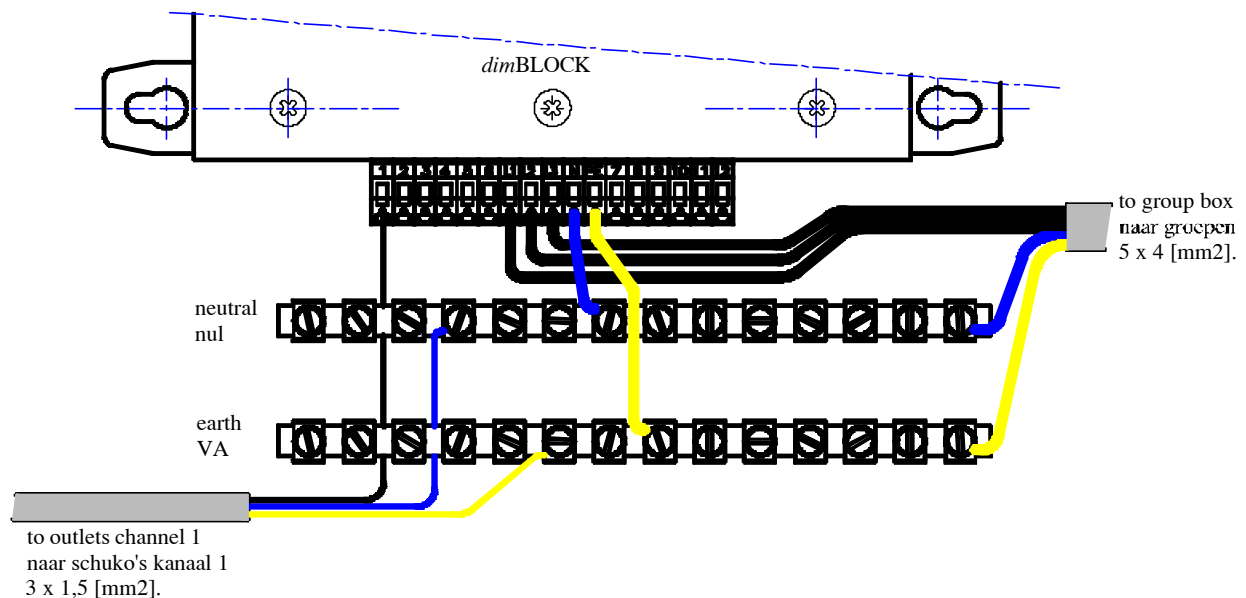
General description

This kit is meant to connect the hardwired option of DimBLOCK, Dimmypack, TRIpack and DimBOX in a easy way. The kit exists of 2 metal dimmer standoffs, a connection box, a connection rail for the neutral and one for the safety earth, 12 cable glands M20x1.5 with a clamping range 8.0-13.0 mm, 4 cable glands PG21. For the outgoing cable you have a choice between 12 separate cables (3x1.5mm²) or 2 multi cables.

How to connect the in- and outgoing cables

The mains cable, 5x4[mm²]: connect the neutral on a rail in the box, connect the safety earth on a rail in the box, connect the phase wires direct to L1, L2 and L3 on the terminal block from the dimmer.

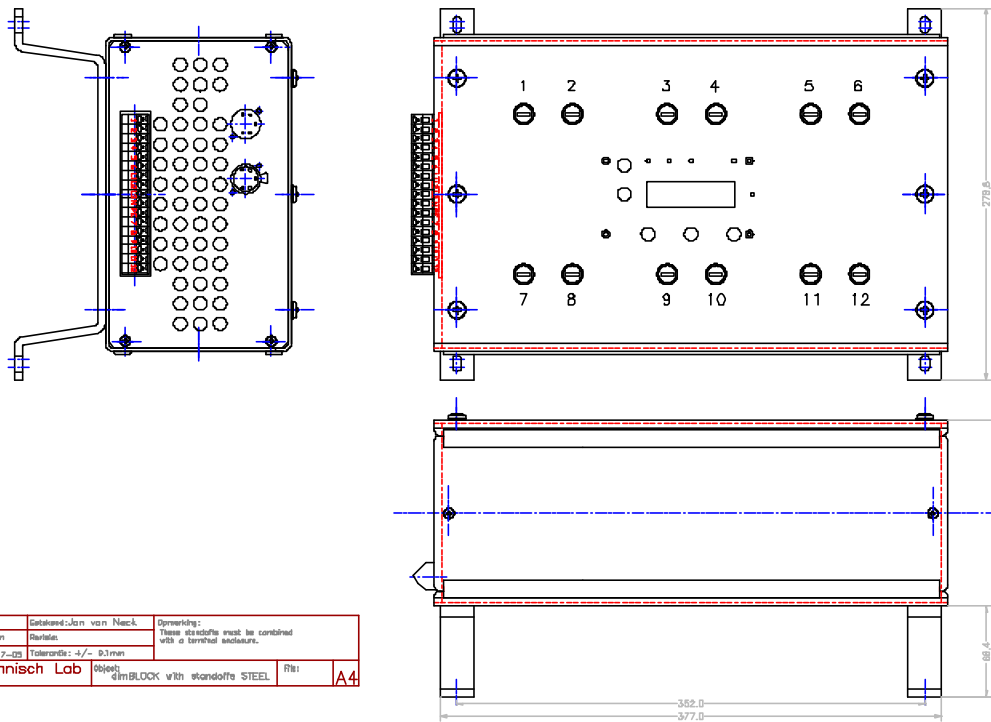
A dimmer output cable (3x1.5[mm²]): the dimmed phase is connected on the terminal block from the dimmer, the neutral is connected to the neutral rail in the box and the earth is connected to the safety earth rail in the box. Of course instead of 12 separate outgoing cables you can also use two multi cables.



Mounting the standoffs on the backside of the dimmer

First you have to remove the four black plastic screw covers. Remove all the screws on the backside. Place the standoffs and fix them with the screws that came along with the standoffs (M6x16). **Attention in case of dimBLOCK, you have to use for the middle screw a M6x12 type because otherwise you block the blower!**

Dimensions Dimblock and wall standoffs



Dimblock combined with installation kit

